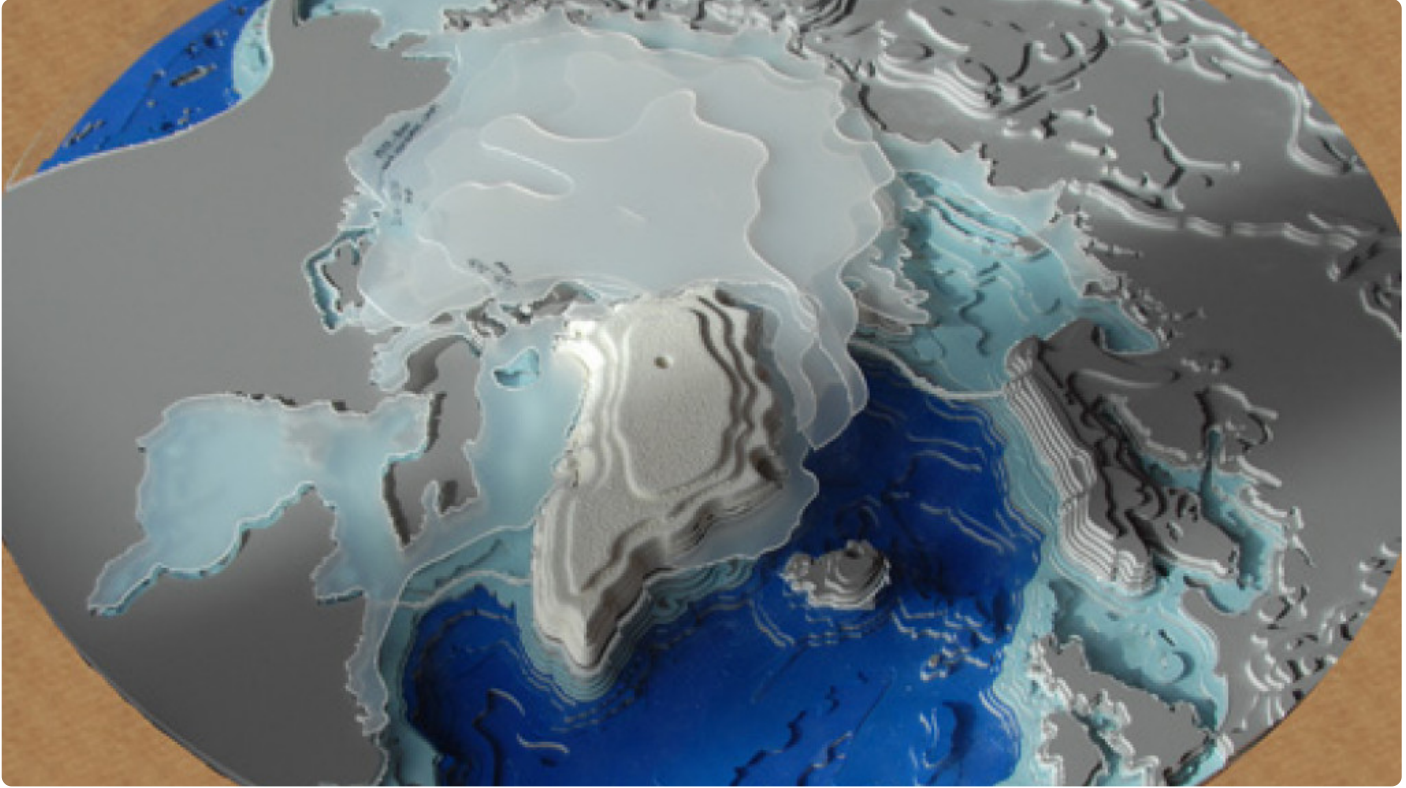


# EDUCATIONAL ARCTIC AND ANTARCTIC 3D PUZZLES



These Arctic and Antarctic 3D puzzles are aimed at kids from 12 to 14 years old. By showing the various layers of land, ocean and ice, these puzzles will constitute a solid background activity to teach children about the geography as well as the flora and fauna of both Polar Regions. To complement the puzzles, side experiments and discussions about the role of Polar Regions in the climate system are also available to kids and teachers.

After a successful trial phase in Flemish classrooms, these new 3D puzzles representing both the Arctic and Antarctica will be presented at [Hidrodoe](#), the interactive hands-on water activity centre in Herentals (Belgium) on the 17th and 24th of April. They will also be showcased in [WetenshopsEXPOscience](#) from the 3rd to the 5th of May. Both puzzles will then be used in subsequent IPF educational activities or events.

These tools have been built and tested by the IPF with the kind support of the "[Wetenschap maakt Knap](#)" programme of the Belgian Flemish Government within the framework of its goal to help the general population become more familiar with science and technology.