

INTERNATIONAL POLAR FOUNDATION



ANNUAL
REPORT
2008

Table of contents

I.	Foreword
II.	The International Polar Foundation Bridging the Science-Society Divide
III.	Structure of the IPF
IV.	Focus of the Year: Class Zero Emission
V.	Activities of the IPF
VI.	The IPF websites
VII.	IPF Publications
VIII.	Attachments



I. Foreword

At the International Polar Foundation (IPF), we believe that the debates surrounding the scientific, technical and economic issues with regard to scientific research policy, climate change and sustainable development, however complex and highly specialized, should not exclude the general public. Therefore, the IPF aims, by making the principal concepts of these important issues accessible to the general public, at involving society in the debate while improving the scientific capital of the coming generations.

With its “Climate action and renewable energy package” i.e. the ambitious 20/20/20 plan by 2020, Europe has taken the lead in the fight against climate change. This plan, a strong signal to the international community, underlines the will to address the issue. It proves that, on the question of climate, Europe will continue to put forward reasoned, visionary and ingenious policies. Therefore, through its various projects, the International Polar Foundation contributes to the implementation of the EU’s Climate Change Policy and demonstrates that the various alternatives to reduce the carbon footprint of human activities in sectors such as habitat, mobility, or energy efficiency and production are viable.

While playing an active role in transmitting knowledge on climate change and on the policies surrounding it, the IPF insists on demonstration as a way to support the implementation of climate change policies. Within this framework, the Princess Elisabeth research station program, which saw the construction of the Princess Elisabeth Station in Antarctica during the consecutive construction phases of 2007-2008 and 2008-2009, can be touted as a milestone. The project, which reaches ground-breaking “zero emission” operations through the use of various combined sources of renewable energies and existing technologies shows that far-reaching goals are achievable in the most inhospitable environment on Earth, and therefore, in any other surroundings.

A handwritten signature in black ink, reading "Alain Hubert", followed by a long horizontal line extending to the right.

Alain Hubert, President of the Board of Directors of the IPF

II. The International Polar Foundation Bridging the Science-Society Divide

The International Polar Foundation (IPF) was created with the aim of providing a novel interface between science and society, and was recognized by Belgian Royal Statute as a public utility foundation in 2002. The IPF seeks to bring about a keener appreciation of the role of science, and in particular scientific research in the Polar Regions, through a re-examination of the World, its interlinkages, its fragility and the impact of human actions on the environment and the evolution of millennial climate cycles.

As we advance through the 21st century, the need to find coherent responses to the questions which concern our relationship with the Earth becomes more urgent. The impact of human activities on the finite, fragile biosphere on which we depend for survival has been such that natural cycles are perturbed.

Researchers in the Polar Regions have been actively trying to fill gaps in knowledge to address the uncertainties surrounding the pace, magnitude and direction of change related to global warming. After painstaking research on the polar ice caps of Antarctica and Greenland, evidence was yielded that finally established the causal link between human related carbon dioxide emissions, mean surface temperature, and climate change. Accelerated warming could unlock the billions of tons of fresh water held in these same ice caps, causing sea levels to rise.

The Arctic sea ice, too, has a dual function. Being particularly sensitive to warming trends on the planet, it is an early warning system and a reflective shield that keeps in check any acceleration of the warming process.

In light of the crucial role of the Poles in regulating the heat balance of the Earth, it has become crucial that the scientific effort to understand the mechanisms be sustained and the latest scientific findings be brought into the public domain. To this end, the International Polar Foundation (IPF) has set out to support the efforts of the international scientific community by providing new tools for the dissemination of research findings to the wider public, and by leveraging support for research infrastructure and activities.

Our mission

Inform...

the wider public on the importance of polar research in understanding how the Earth's climate functions as a complex and unified system, and disseminate the results of research on the Polar Regions and on climate change.

Educate ...

by offering to the educational community the tools and resources necessary for efficiently communicating complex ideas through, inter alia, stimulating classroom debate and interaction

Demonstrate ...

by providing examples of best practice with respect to the means for addressing the causes and adapting to the effects of climate change, through exemplary sustainable development initiatives.

III. Structure of the IPF

International Polar Foundation: Honorary President

H.R.H. Prince Philippe of Belgium
Crown Prince of Belgium

International Polar Foundation: Board

Alain Hubert - Founder - Chairman of the Board of Directors
Polar Explorer, Civil Engineer, Certified Mountain Guide

André Berger - Founder
Climatologist, Professor at the Université Catholique de Louvain (Belgium) and former President of the European Geophysical Society

Hugo Declair - Founder
Glaciologist, Professor at the Vrije Universiteit Brussel (Belgium) and Chairman of the Belgian National Committee on Antarctic Research (BNCAR)

Jacques Brassinne de la Buissière - Vice-President
PhD in Political Science
President of the Brussels Museum of Polar History and Exploration

N.F.D. Amin - Vice-President
Environmental Chemist, Global Strategies Director

François-Xavier Huberlant
CEO Airpar

Polaris Centre a.s.b.l./ v.z.w.: Board

Alain Hubert - Chairman
Management Committee

N.F.D. Amin
Management Committee, International Polar Foundation

Jean-Marie De Backer
Partner, De Backer & Associates

Philippe de Baets
Chief Executive, Rolex Benelux

Thierry de Molinari
Chief Executive, CDA

Alain De Waele
Secretary General, InBev-Baillet Latour Funds, President of the « Belgian Team »

Michel de Wouters
Chief Executive, Michel de Wouters Productions

Hugo Ferreira
Assistant General Manager, Compagnie de Trésorerie Benjamin de Rothschild

Bernard Herman

Senior Vice-President, DEXIA BIL

Philippe Maystadt

President, EIB

Pierre Pozzi

Chief Executive Officer, Prefimco S.A.

Marc Speeckaert

Chief Executive Officer, SOFINA

Henri Tassenoy

Management Committee, International Polar Foundation

Luc Willame

President, SDRB

Polaris Centre a.s.b.l.: Management Committee

Alain Hubert

President

N.F.D. Amin

Director External, Legal & Environmental Affairs

Henri Tassenoy

Treasurer

Thierry Touchais

Executive Director

IPF-CH

Laurent Dubois

President

Pierre Dillenbourg

Alain Hubert

IPF-FR

Alain Hubert

President

Nighat F.D Amin

Louis De La Roncière

Arnaud Tortel

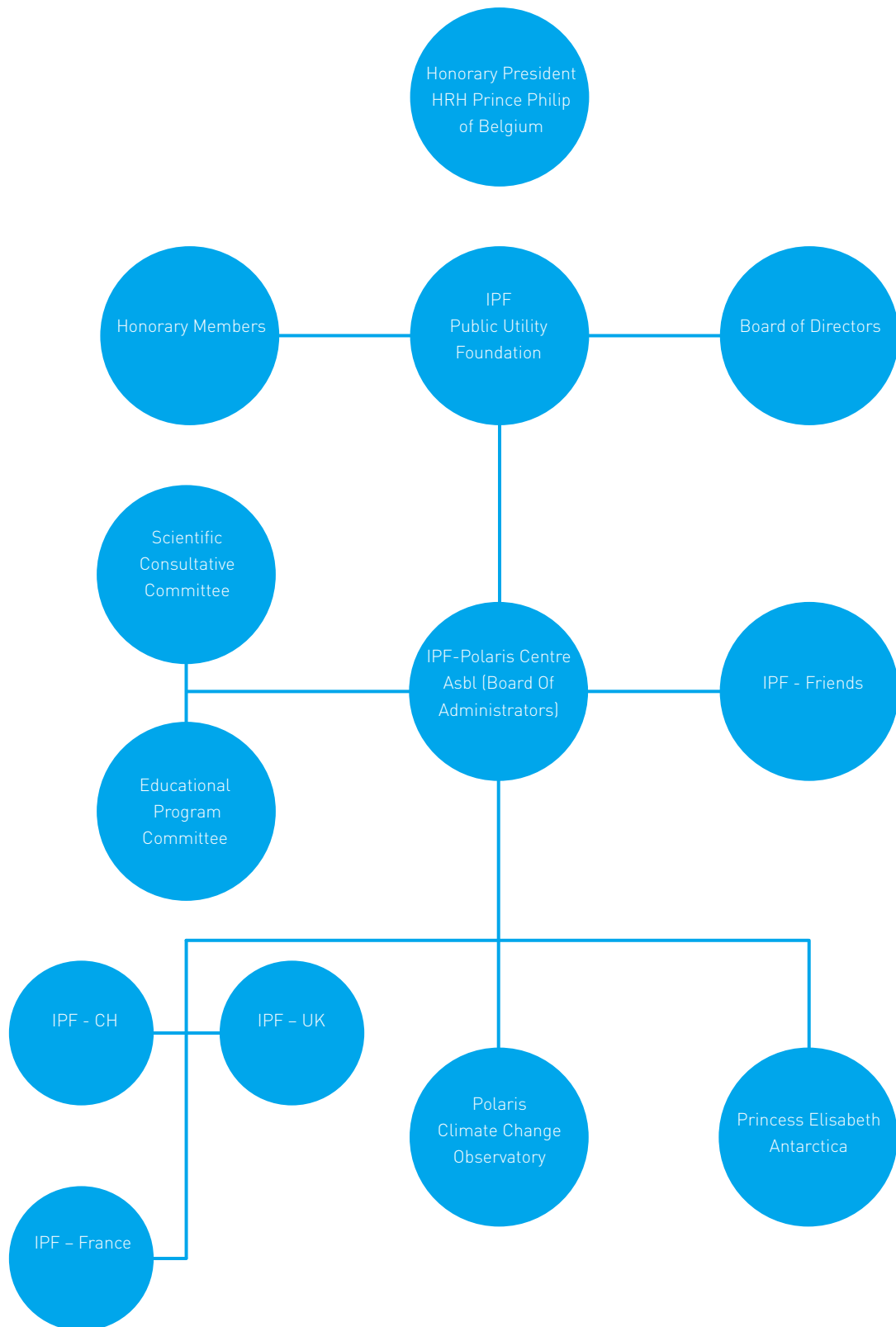
IPF-UK

Sir Andrew Burns

Stephen Cox

Meredith Hooper

Alain Hubert



IV. Focus of the Year: Princess Elisabeth Antarctica



Back in 2004, the International Polar Foundation was commissioned by the Belgian Government to design and build a new research station in Antarctica. The station, Princess Elisabeth Antarctica (PEA), the first one to have been conceived and built entirely according to a “zero emission” concept, will eventually rely solely on renewable wind and solar energy sources to produce its energy. While 2008 covers both the construction phases of the station, the entire project, from start to end, was planned over 5 years and should be officially inaugurated on-site at the end of the 2008-2009 BELARE expedition, thus letting the event coincide with the end of the International Polar Year 2007-2008.

The “Zero Emission” Concept

A major first in various aspects, the Princess Elisabeth Station integrates passive building design with renewable energy sources run through a micro smart grid to manage the use of energy in the station. This micro smart grid’s Programmable Logic Controller (PLC) allows the station to run on one third of the installed power of generally accepted standards, helping it reach its “zero emission” on renewable wind and solar energies through the most advanced intelligent energy network in the world.

Thus conceived for minimal impact on the surrounding environment, PEA’s design prevents heat loss and ensures optimal energy use. The advanced design methodology, including the analyses of the day-to-day requirements and needs of the research teams, the balance of new and proven technologies installed in the station, the intelligent integration to achieve the “zero emission” target, the private sector involvement in the financing, and the private/public partnership for future operations, are as many innovative aspects which open up new possibilities for designing future polar research stations.

Renewable Energy

The station was designed to be entirely powered by a combination of two renewable and carbon-neutral energy sources for energy: wind and solar power. While wind power will be used to supply the station with electricity all year long, solar power will provide both electricity (photovoltaic panels) and warm water (solar thermal panels) during the austral summer (November – March).

Water Treatment

In line with the requirements of the Antarctic Treaty to minimize environmental impact, the Princess Elisabeth Station will be equipped with a specially designed water treatment unit. Inspired by technology developed through space engineering, the bioreactors and filtration units featured in the technical core of the station will allow PEA to treat 100% of its grey and black waters. 75% of this treated water, although fit for human consumption, will be reused to other ends.

Passive Building

The station's skin, insulation, shape, orientation and window disposition allow a comfortable ambient temperature to be maintained inside the building with minimal energy input. Next to these features, sophisticated ventilation and air circulation systems are an integral part of temperature management, and allow for the evacuation of vitiated air, while preventing heat loss. The Princess Elisabeth Station was thus conceived to take full advantage of currently available passive building techniques.

Demand Power Management System (DPMS)

All of the Princess Elisabeth Station's systems are integrated in the technical core and piloted by an intelligent central unit, the Programmable Logic Controller (PLC). So doing, this configuration will ensure that working and living conditions inside the station are optimized with minimal resource consumption.

Class Zero Emission: Bringing Science to Children

After the inauguration of the Princess Elisabeth Antarctica (PEA) station at Tour & Taxis (Brussels) on September 5th, 2007, and the huge public success of the following open doors days, the International Polar Foundation decided to file a project proposal to respond to the emerging demand for PEA related education material and programs. The project, an interactive workshop aimed at pointing attendees towards a low carbon emission lifestyle, will be called Class Zero Emission (CZE) and will feature four spaces tackling various subjects such as polar research, polar exploration, or climate change.

Princess Elisabeth Antarctica: Publications

As an educational add-up to the IPF's Princess Elisabeth Station and the accompanying Class Zero Emission project, the International Polar Foundation released several pedagogical tools to help teachers tackle the topic of climate change and communicate on the importance of polar research in our general understanding of the climate mechanisms that control our planet.

In order to do so, the International Polar Foundation released several pedagogical dossiers on the educapoles.org website. Accessible in Dutch, French and English, these dossiers tackle the topics the Belgian presence in Antarctica through the centuries or the energy and building aspects of the "zero emission" Princess Elisabeth Station in Antarctica.

Princess Elisabeth Antarctica: a Media Success Story

The IPF's communication around Princess Elisabeth Antarctica revolves around coverage on the antarcticstation.org and sciencepoles.org websites, as well as the activities prepared for educapoles.org and the Class Zero Emission interactive workshop by the education team of the IPF.

As described in the IPY Meeting Summary Report of March 2008, the Princess Elisabeth Station is second only to the IPCC and Al Gore joint Nobel Prize on the "top 10 stories" list, and is the IPY-related subject which received most press release citations in the international mass media.

V. Activities of the IPF

Princess Elisabeth Antarctica

BELARE 2008-2009

2008 was a special year for the Princess Elisabeth Station in Antarctica as the year saw both construction phases that would eventually lead to the actual completion of PEA on Utsteinen Ridge in Queen Maud Land. While the first construction phase of BELARE 2007-2008 saw the successful set up of PEA's foundations on the ridge and the closing of its external shell in time for its first overwintering, the second construction phase planned for the integration of all the technical systems in the stations core should eventually be rounded up with a successful on-site inauguration on February 2009.

In between those two BELARE seasons, the technical systems to be integrated in the Princess Elisabeth Station's core were brought to the Laborelec (GDF Suez) facility in Linkebeek to be pre-integrated and tested prior to their on-site integration in Antarctica. At the same, time, PEA partner Schneider Electric fulfilled the first phase of the programming of the energy management software.

Scientific Programs



The BELARE 2008-2009 season also marks the start of the research era at the "Zero Emission" facility. The first projects to have started in 2008 were BELLISSIMA (BELgian Ice Sheet-Shelf Ice Measurements in Antarctica), a project headed by Dr Frank Pattyn (Univeristé Libre de Bruxelles), and BELDIVA (BELgian microbial DIVersity in Antarctica), a project headed by Annick Wilmotte (Université de Liège)

Over the course of its two first operational seasons, the Princess Elisabeth Station served as a logistics base for six Belgian and international projects.

The International Polar Year 2007-2008 (March 2007 – March 2009)

IPY-IPO: Education and Outreach

The IPF has continuously contributed to the Education & Outreach Committee of the International Polar Year Office. Upon closure of the International Polar Year, in February next year, a meeting will be planned in Oslo 2010 to review the scientific outcome of the IPY endorsed programs and their educational potential.

6th Continent Initiative

The 6th Continent Initiative is a joint project by the International Polar Foundation and the Scientific Committee on Antarctic Research (SCAR). The project, endorsed by the IPY Joint Committee, aims at providing access to Antarctic scientific activities to researchers from developing countries, and supports the development of scientific capacity in polar science among non-traditionally polar countries.

IPY IGLO (ECSITE)

The IPY IGLO project is an initiative launched by the Association of Science -Technology Centers (ASTC) designed to raise public awareness worldwide about the impact of climate change. The IPF, which has access to most of the polar research outcomes and makes them available to the general public, is a partner in the project.

With the aim of improving general understanding and appreciation of polar research, this project uses the most advanced techniques to communicate on the results of polar research towards the general public.

IPF's Sciencepoles.org featured as a reference on the IPY website

Within the framework of the 2007-2008 IPY, the International Polar Foundation's Sciencepoles.org was one of the reference sources featured on the homepage of the International Polar Year, contributing to the RSS feeds and various articles.

CHINARE 25: Chinese Antarctic Expedition

In accordance with the spirit of the 4th international Polar Year (IPY), IPF journalist Jean De Pomereu became the first outsider to ever have the opportunity to accompany a Chinese Antarctic Expedition from Freemantle to Antarctica.

Embarking on the Xue Long (Snow Dragon) as the media liaison officer, Mr De Pomereu significantly contributed to the International Polar Foundation's polarfoundation.org and sciencepoles.org websites through his various articles and regular news updates.

In total, compiled coverage for the 2008-2009 Chinese Antarctic campaign include 14 live reports, a picture gallery and five articles and interviews that were featured on sciencepoles.org.

The InBev Baillet-Latour Fellowship Award

A joint initiative of the International Polar Foundation and the InBev Baillet-Latour Fund, the InBev Baillet-Latour Antarctica Fellowship Award aims at promoting scientific research at and in the vicinity of the Princess Elisabeth Station in Antarctica.

The first edition of the award was given for the first time in 2008. Following a call for proposals, FWO Post-doc Research Fellow at the University of Ghent, Elie Verleyen became the first laureate of the research fund. Elie Verleyen will thus be conducting research in Antarctica during the BELARE 2009-2010 season, accompanied by a paleoenvironmental expert from the British Antarctic Survey to study the deglaciation history and past climate variation in and around the Sør Rondane Mountains.

DAMOCLES over Europe

DAMOCLES (Developing Arctic Modeling and Observing Capabilities for Long-term Environmental Studies) is a EU project for an integrated ice, atmosphere & ocean monitoring and forecasting system designed for observing, understanding, and quantifying climate change in the Arctic. It represents the integrated efforts of 45 European research institutions and is coordinated with the USA, Canada, and Japan.

As a partner of DAMOCLES, the IPF developed a mobile exhibition to communicate on the actions of the project. This mobile exhibition, which was made available for use in connection with polar information events held in European countries during the International Polar Year 2007-08 (IPY), held several stops in 2008, such as Paris (June 2008), Berlin (Summer 2008), or Luxembourg (Winter 2008).

Overview of Forums, Symposiums, and Conferences Participation

Over the course of the year 2008, the International Polar Foundation actively participated in various conferences given in schools and corporations. As numerous companies have started to implement CO2 awareness and reductions programs, several of them requested the given conferences as incentives to their employees. The IPF positions itself as a partner for the corporations wishing to walk down the path of sustainability by implementing a lower carbon behavior.

In accordance with its mission to educate and communicate on science, the IPF has participated in several science days or science weeks, such as HIDRODOE – IPY (February 2008), the 'Ville Européenne des sciences' (Paris, November 2008), or the Tunza conference (Norway, June 2008) organized for schoolchildren. The IPF booth included flash animations and movies describing the Polar Regions and the BELARE activities in Antarctica, as well as interactive educational tools to offer lab sessions lasting 20 to 45 minutes to classes.

While 2008 has been a particularly intense year for the IPF in terms of conferences given and attended, the highlights include the conferences held by IPF President Alain Hubert at the OECD Forum – Paris (June 3rd), the New York Explorer's club – New York (June 21st), or Friends of Europe – Brussels (October 9th).

Awards and Prizes Received in 2008

“Climate Change and Energy Award” by the Prince Albert II of Monaco Foundation

In 2008, the first edition of the “Climate Change and Energy Award” from the Prince Albert II of Monaco Foundation was discerned to IPF President Alain Hubert for his “clairvoyance and commitment towards climate change-related issues.”

Golden Fleece Award for “Adventurer of the Year”

In 2008, Alain Hubert was granted the Golden Fleece Award for his 2007 “Arctic Arc” crossing from Siberia to Greenland via the North Pole and honored for his scientific contribution through the International Polar Foundation (IPF).

Alain Hubert was also awarded a Special Mention from the jury for the “audacity and originality of his views” on the Arctic in the movie “Beyond Silence”, a coproduction of the IPF and MdW Productions.

“Reporters of the Poles”

In 2008, the International Polar Foundation launched the “Reporters of the Poles” contest. The contest, aimed at encouraging children to help raise awareness on one of the themes suggested in the framework of the Arctic Arc project through a written, video, or audio report, was won by the St François de Sales School from Dijon (France). The winners thus had the opportunity to exchange their questions and impressions with IPF Executive Director, Thierry Touchais.

Draw your own “Zero Emission” Station contest

Through the “Draw your own ‘Zero Emission’ Station contest”, the International Polar Foundation offered 8 to 12-year old children the opportunity to share their views on the Princess Elisabeth Station in Antarctica. The six winning drawings were sent to Antarctica to be featured at the official on-site inauguration of the station in 2009.

The International Polar Year IPY 2007-2008 (March 2007 – March 2009)

IPF in the Education and Outreach Committee of the IPY

Throughout the 4th IPY, the IPF has been a major contributor to the Education & Outreach Committee of the International Polar Year Office. Upon closure of the IPY, in February 2009, the decision was taken to convene a meeting in Oslo 2010 to further review the scientific outcome of the IPY-endorsed programs and their educational potential.

IPF at the IPY closing ceremony in Geneva

The International Polar Foundation directed and produced “Beyond the Poles” as the only WMO and ICSU official movie for the closing ceremony of the 4th IPY. It premiered at the World Meteorological Organization (WMO) in Geneva (Switzerland) and has been screened throughout the year to WMO visitors with great response. The movie offers a closer look at some of the polar research projects carried out across the globe throughout the IPY and a wider perspective into the future of our planet.

IPF’s Sciencepoles.org featured as a reference on the IPY website

Within the framework of the 2007-2008 IPY, the International Polar Foundation’s Sciencepoles.org was one of the reference sources featured on the homepage of the International Polar Year, contributing to the RSS feeds and various articles.

50th Anniversary of the Antarctic Treaty

The 32nd Antarctic Treaty Consultative Meeting (ATCM) celebrated the 50th Anniversary of the Antarctic Treaty. At this event Ms. Nighat Amin, Vice-President of the IPF, introduced the international public to the different innovative achievements of the Princess Elisabeth Station. A screening of the IPF’s “Aiming for ‘Zero Emission’”, which positions the project at large within the historical context of Belgium’s presence in Antarctica, preceded the special presentation.

During the event, warm congratulations were given to President of the International Polar Foundation and Director of the Princess Elisabeth Station Antarctica project, Alain Hubert, “whose energy and determination transformed this project into reality.”

Damocles over Europe

DAMOCLES (Developing Arctic Modeling and Observing Capabilities for Long-term Environmental Studies) is a EU project for an integrated ice-atmosphere-ocean monitoring and forecasting system designed for observing, understanding and quantifying climate change in the Arctic. It represents the integrated efforts of 45 European research institutions and is coordinated with the USA, Canada and Japan.

As a partner of DAMOCLES, the IPF developed a mobile exhibition to communicate on the actions of the project. This mobile exhibition, which was made available for use in connection with polar information events held in European countries during the International Polar Year 2007-08 (IPY), closed its tour with two stops in 2009: the University of Luxembourg (Dec 2008 – Feb 2009) and Class Zero Emission, where it will stay until August 2011.

Overview of Forums, Symposiums, and conferences Participation

Over the course of 2009, the IPF participated in numerous conferences, symposiums, and forums, as well as in various events to bring all stakeholders to action at several levels: individual, community, academia, corporate, political and administrative, public at large.

Seeking to contribute significantly to climate change policy making, the International Polar Foundation participated in various high profile events such as the European Polar Summit (June 2009), Friends of Europe's European Policy Summit (June 2009) or the European Economic and Social Committee (EESC): Save It! (September 2009).

In accordance with its mission to provide a novel interface between science and society, the IPF further took part in several conferences among which the Printemps des sciences (March 2009), the Arctic Transform Conference (March 2009), or Greenweek (June 2009).

In addition to these events, the International Polar Foundation further participated in several IPY related events such as the IPY Closing Ceremony held in Geneva. As a prominent member of the Education and Outreach Committee of the IPY, the IPF was selected to provide the official movie "Beyond the Poles".

Awards and Prizes Received in 2009

Harvard Leadership Prize

The Harvard Leadership Award for the year 2009 was awarded to IPF President Alain Hubert for his legacy by the Harvard Club of Belgium. The prize is awarded each year to an individual or organization which embodies Harvard University's values and has made significant economical, cultural, scientific or socio-political impact on society.

The International Polar Foundation (IPF) was recognized by the Leadership Prize to have provided a "means to address climate change" through its "innovative and scientific approach" to address the issue of climate change and encourage society to become involved.

Honorary Doctorate of the University of Hasselt

On May 28th, the University of Hasselt (Belgium) awarded an honoris causa-degree to Alain Hubert, founding President of the International Polar Foundation and author of the Princess Elisabeth Station project in Antarctica, for demonstrating "how existing scientific knowledge can foster rational solutions in facing today's social challenges."

Green Good Awards for Foundations

Having designed and built the Princess Elisabeth Station in Utsteinen, Antarctica to operate solely on renewable energies in the most demanding conditions on earth, the International Polar Foundation was awarded the 2009 Green Good Design Award for Foundations by the Chicago Athenaeum: Museum of Architecture and Design, and the European Centre for Architecture Art Design and Urban Studies.

IPY Certificate of Appreciation

The World Meteorological Organization (WMO) and the International Council for Science (ICSU) awarded the International Polar Foundation's President, Mr. Alain Hubert, and Vice-President, Ms. Nighat Amin, with a certificate of appreciation.

With its numerous valuable contributions throughout the International Polar Year 2007-2008, the IPF has significantly helped to make it a success and an enduring example of international collaboration.

VI. The IPF Websites

Polarfoundation.org

Polarfoundation.org is the International Polar Foundation's main website. The website, which is dedicated to communication on the various IPF initiatives, projects, and events, fulfills the IPF's mission as a bridge between science and society.

Polarfoundation.org is directed towards the general public and features movies, flash animations, picture galleries, news items, press releases, and a calendar of events to bring about a keener understanding of the International Polar Foundation's objectives.

Sciencepoles.org

Dedicated to science, the International Polar Foundation's Sciencepoles.org serves as a unique platform for polar research institutions and scientists to communicate on their research. Through scientific vulgarization, the website contributes significantly to the IPF's role as a bridge between science and society.

Targeting policy makers as well as the general public, Sciencepoles.org features:

- daily news updates on recent findings and publications,
- in-depth interviews with prominent members of the polar researchers' community,
- feature galleries on polar environments and research,
- picture galleries of polar landscapes, logistics, and scientific fieldwork,
- a detailed calendar of polar research-related events.

Educapoles.org

Educapoles.org is a website that helps the International Polar Foundation to achieve one of its three key missions: educate. The website, which brings together the IPF's educational and multimedia tools, has the mission to inform the teachers' community, raise awareness of the poles' importance as an early warning system and unique laboratory, and mobilize people by providing the means for them to take action in full knowledge of their implications.

Targeted at teachers, future teachers, and all actors involved in education, Educapoles.org offers pedagogical dossiers, flash animations, videos, picture galleries, tales and ready-made contents such as quizzes, scientific experiments, and classroom activities.

Explorapoles.org

Dedicated to Arctic and Antarctic expeditions, Explorapoles.org uses polar adventures as a means to bring people, and especially younger people's attention to the environmental fate of the Earth and the evolution of the Polar Regions.

Following polar expeditions in the Arctic (from mid-February until the end of June) and the Antarctic (from mid-November until the end of February), Explorapoles.org has already covered hundreds of expeditions and features an updated listing of polar explorers.

Antarcticstation.org

Antarcticstation.org is dedicated to the International Polar Foundation's flagship project: the Princess Elisabeth Station in Antarctica. The website offers the general public the opportunity to keep in touch with the news and events on Utsteinen Ridge, in Queen Maud Land.

Besides the regular news updates and picture galleries (during the season), Antarcticstation.org features videos, general information on the project, as well as interviews with team members.

VII. IPF Publications

Over the course of the year 2008, the International polar Foundation has produced or participated in several publications. While the detailed list of the website publications is included in the attachments of the present annual report, the basic outline of the website publications goes as follows:

Sciencepoles.org: 34 articles, interviews, feature articles.

EducaPoles.org: 21 flash animations, 3 children's tales and 19 pedagogical dossiers.

Antarcticstation.org: 5 press releases, 113 news items and interviews, and 20 picture galleries.

Movies

Station Princess Elisabeth: Building the Future

This movie, directed by the International Polar foundation and partially financed by the InBev-Baillet Latour Fund, presents the Princess Elisabeth Station. "Station Princess Elisabeth – Building the Future" retraces the construction history of the first "zero emission" research station, while describing its special features, as well as the challenges it had to face.

"Beyond Silence"

The movie "Beyond Silence" follows polar explorers Alain Hubert and Dixie Dansercoer on their "Arctic Arc" expedition – the first crossing of the Arctic from Northern Siberia to Greenland via the North Pole.

The movie further shows how the two men, while on their expedition collected scientific data for the European Space Agency (ESA). After completion, the expedition became the subject of an educational project by the International Polar Foundation launched within the framework of the IPY.

CD-ROMS

The International Polar Foundation released two CD-ROMs in 2008: Energy and Biodiversity. These CD-ROMs, which compile the various flash animations prepared on the subjects of Energy and Biodiversity, allow children to become better acquainted with these topics, while providing them with the knowledge they need to eventually adopt a more sustainable way of life.

Biodiversity

As part of a public awareness program supported by the Wallonia Region, the IPF, in collaboration with the WWF, has created an educational CD-ROM focusing on biodiversity and climate change.

This CD-ROM, in order to raise awareness among young people, contains 15 flash animations on the impact of climate change on biodiversity.

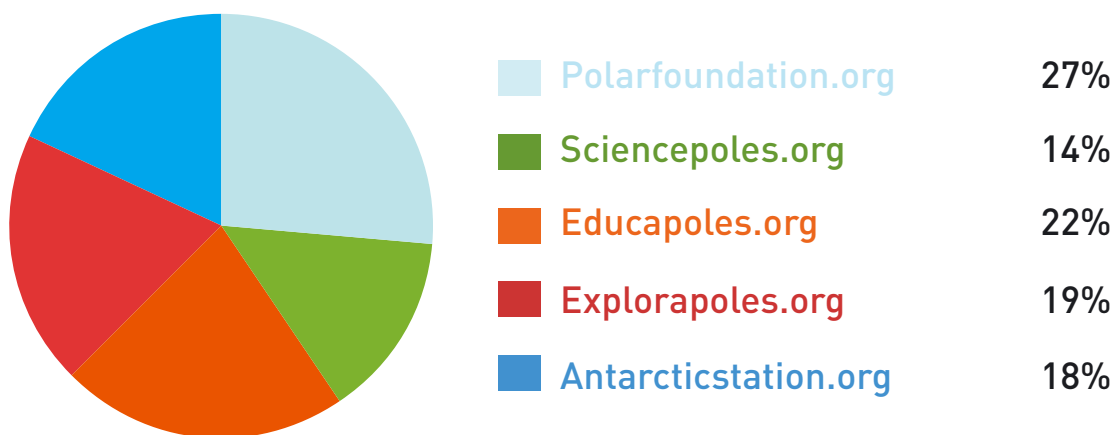
Energy

As part of a public awareness program supported by the Wallonia Region, the International Polar Foundation (IPF) has issued an educational CD-ROM focusing on energy.

This CD-ROM, designed for teachers and environmental educators, regroups 15 flash animations to address energy within the broader perspective of climate change. It further provides young people with useful tips on actions they can take to preserve and protect their environment.

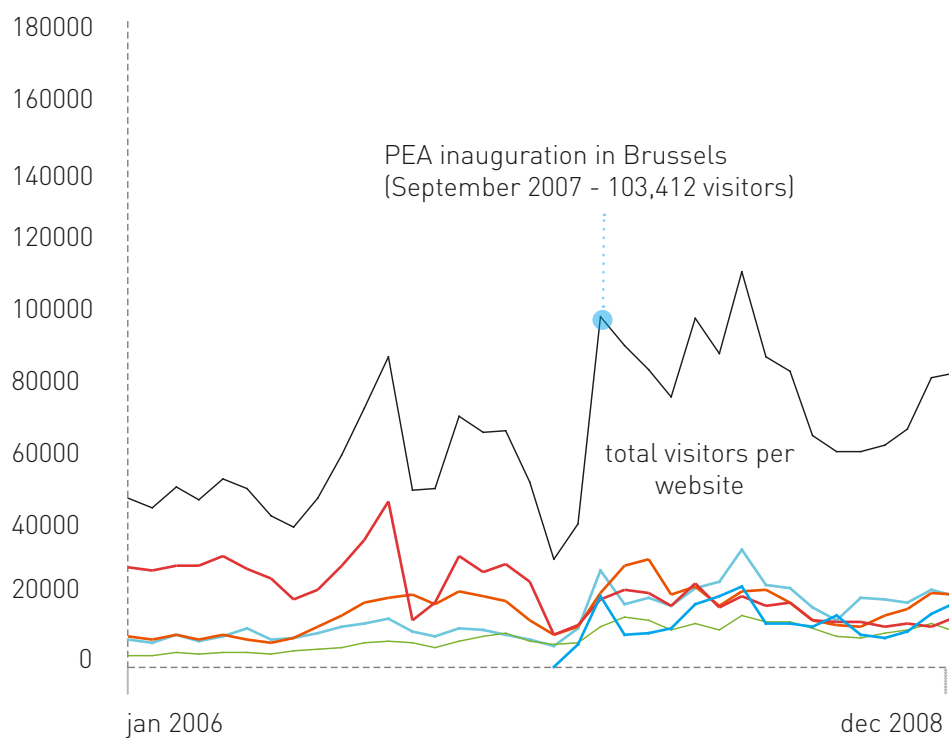
Website statistics

Shares of the websites in the 2008 visitor rates



Total of visitors: 994.387

Visitors per websites from January 2006 to December 2008



VIII. Attachments

Sciencepoles Publications

Articles and Interviews

- Dr. Qu Tanzhou Interview: China's Growing Contribution to International Polar Research - 29/01/2008
- Professor Frank Pattyn: Launching the Princess Elisabeth Station Research Programme - 14/02/2008
- The IPY EALÁT Project: Studying How Indigenous People Adapt to Climate Change in the Arctic - 27/02/2008
- The IPY EALÁT Project: Studying How Indigenous People Adapt to Climate Change in the Arctic - 27/02/2008
- Professor Huigen Yang: Developing China's Polar Research Capacity - 6/03/2008
- Philippe Mettens on Belgium's Return to Antarctica - 17/03/2008
- Wim Vyverman: Using microorganisms in Antarctic surface lakes to reconstruct past Antarctic climate - 28/03/2008
- Seeking Answers Beneath the ice: Dr Cynan Ellis Evans on Antarctic Sub-glacial Lakes - 01/04/2008
- Increased Precipitation in the High Latitudes - 18/04/2008
- Angelika Humbert on the Wilkins Ice Shelf Break-up - 07/05/2008
- Black Carbon: Playing a Major Role in Arctic Climate Change - 12/06/2008
- Stephen Warren: Sampling Arctic Snow to Determine Black Carbon Concentrations - 13/06/2008
- Charlie Zender and Florent Dominé: Measuring Albedo of Snow Contaminated with Black Carbon - 13/06/2008
- CAML: Observing Top Predators at Sea Onboard the Ivan Papanin - 03/07/2008
- Towards a Polar Decade (and the Rising Cost of Oil) - 22/07/2008
- Gamburtsev: Dr Robin Bell on Antarctica's Ghostly Mountains - 19/08/2008
- Dr. Orson Smith: How Arctic Engineers Are Facing the Challenges of a Changing Climate - 02/09/2008
- Anne Aghion: Filming 'Ice People' - 03/10/2008
- Dr. Stein Sandven of NERSC on Arctic Regional Ocean Observing Systems - 17/10/2008
- Accompanying China to Antarctica - 14/11/2008
- Chinese Antarctic Expedition: Xue Long (Snow Dragon) - 14/11/2008
- Chinese Antarctic Expedition: Southern Ocean - 17/11/2008
- Chinese Antarctic Expedition: Barrier of Sea-Ice - 18/11/2008
- How Does Physical Activity Affect Sleep Quality in Antarctica? - 18/11/2008
- Portrait of Mr Li Yuansheng: Leader of the Dome A Traverse and Construction Team - 21/11/2008
- Chinese Antarctic Expedition: So Near - So Far - 24/11/2008
- Chinese Antarctic Expedition: PLATO and the Future of Astronomy at Dome A - 28/11/2008
- Chinese Antarctic Expedition: Close CallScientific article - 01/12/2008
- Chinese Antarctic Expedition: Antarctica Rules - Zhongshan at Last! - 03/12/2008
- Ice, Ocean, and Atmosphere: Science at Zhongshan Station - 08/12/2008
- Frozen Grail: Dome A and the Future of Ice Coring in Antarctica - 16/12/2008
- Dome A Traverse and Kunlun Station - 18/12/2008
- Using a Mix of Indigenous Knowledge and Scientific Data to Improve Climate Change Adaptation Strategies in the Far North - 25/12/2008
- Adam Lewis on Using Indigenous Knowledge in Monitoring Arctic Ice Cover - 29/12/2008

Educapoles Publications

Pedagogical Dossiers

- Impacts of Climate Change on Humans - 11/01/2008
- The biodiversity - teaching dossier - 14/01/2008
- Biodiversity and climate change - 29/01/2008
- Biodiversity: Relocation of Species - 08/02/2008
- The benefits of biodiversity - 18/02/2008
- Invasive species - 22/02/2008
- Biodiversity and Food - 25/02/2008
- Biodiversity - Natural Rhythms - 05/03/2008
- Biodiversity - Coral Reefs - 18/03/2008
- Biodiversity in the Arctic - 27/03/2008
- Biodiversity in Belgium - 02/04/2008
- Biodiversity in the Fagnes - 07/04/2008
- Biodiversity in the North Sea - 15/04/2008
- Preserving biodiversity: adjustment strategies - 22/04/2008
- Biodiversity: Things We Can Do - 09/05/2008
- 'Belgians in Antarctica': an educational dossier for teachers and pupils - 15/12/2008
- The BELARE expeditions - a dossier for teachers and pupils in class - 15/12/2008
- The station: from the inside out - a dossier for teachers and pupils - 15/12/2008
- The technical aspects of the station: energy-efficiency and wastewater treatment - 15/12/2008

Flash Animations

- The biodiversity: introduction - 13/01/2008
- The biodiversity: climate change - 19/01/2008
- The biodiversity: relocation of species - 22/01/2008
- The benefits of biodiversity - 08/02/2008
- Biodiversity: Invasive Species - 11/02/2008
- Biodiversity and Food - 20/02/2008
- Biodiversity - Natural Rhythms - 03/03/2008
- Biodiversity - Coral Reefs - 17/03/2008
- Biodiversity in the Arctic - 25/03/2008
- Biodiversity in Belgium - 27/03/2008
- Biodiversity in the Fagnes - 29/03/2008
- Biodiversity in the North Sea - 07/04/2008
- Preserving biodiversity: adjustment strategies - 22/04/2008
- Biodiversity: Things we can do on a Daily Basis - 25/04/2008
- Biodiversity - test your knowledge - 30/04/2008
- Where does energy come from? - 24/09/2008
- Resources and reserves: how much energy is left underground? - 24/09/2008
- How much does energy cost? - 24/09/2008
- Tracking electricity - 01/10/2008
- Current and future energy sources - 01/10/2008
- Biofuels, a "green" alternative to oil? - 01/10/2008

Children's Tales

- Avalak and the Electric Prince - 13/11/2008
- Mother Nature's Fury - 13/11/2008
- Mr. H and the Mystery of the Meteorite - 19/11/2008

Financials 2008

Consolidated Income Statement

Euros

Revenue	6 905 293
Expenses	-10 217 153
Result from activities	- 3 311 860
Excess from Continuing Operations	- 3 402 986
Excess (Deficit) Before Income Tax	- 3 077 588
Excess (Deficit) of the Period	- 3 077 588

Consolidated Balance Sheet

Euros

Non-Current Assets	1 885 666
Current Assets	3 581 051
Total Assets	5 466 717

Equity	25 000
Retained Earnings	704 852
Accounts Payable	4 736 865
Total Liabilities	5 466 717

